

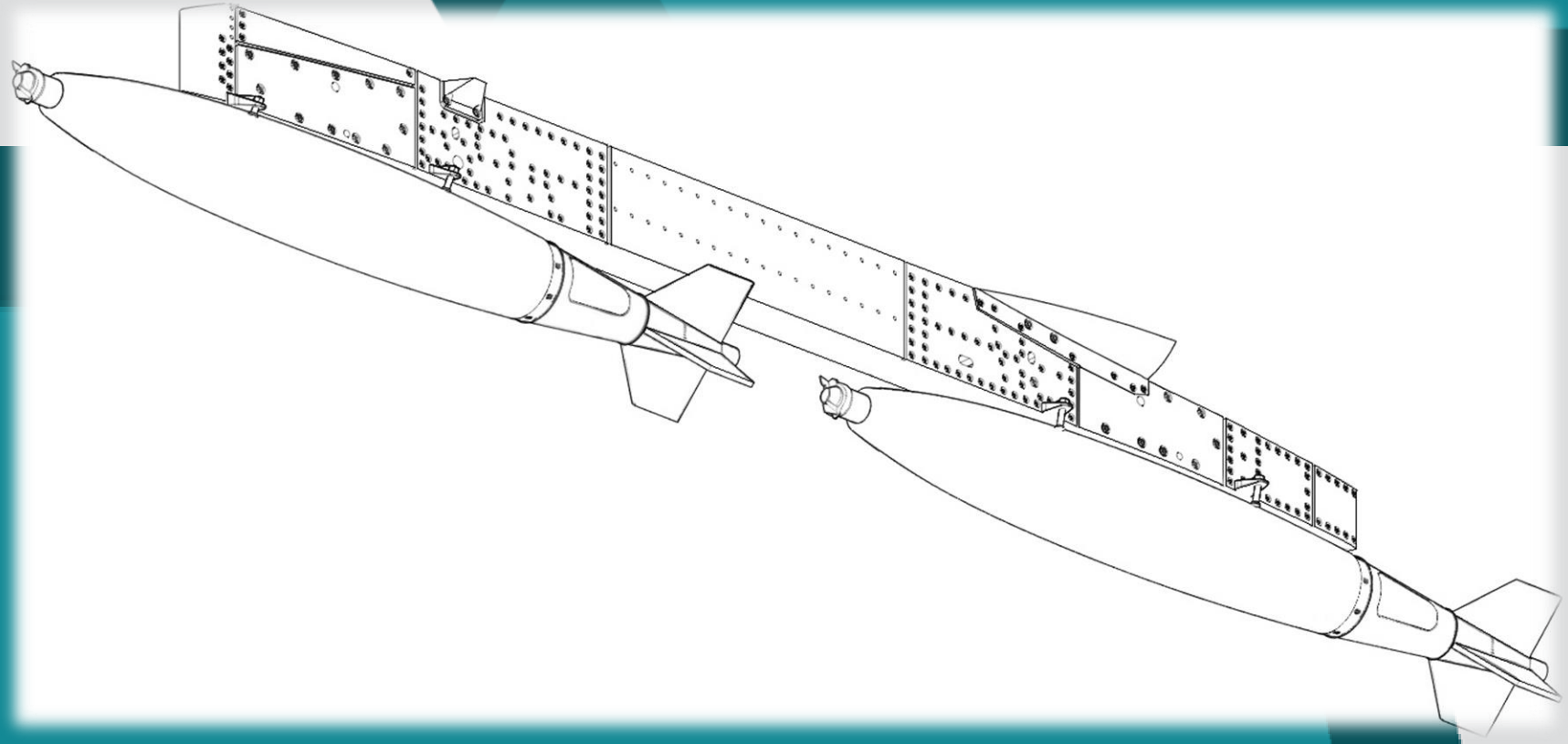


ARTMAN
DELTA

A passion for accuracy and detail

Information Pack:

PM-3 Centerline Bomb Pylon





ARTMAN

DELTA

A passion for accuracy and detail

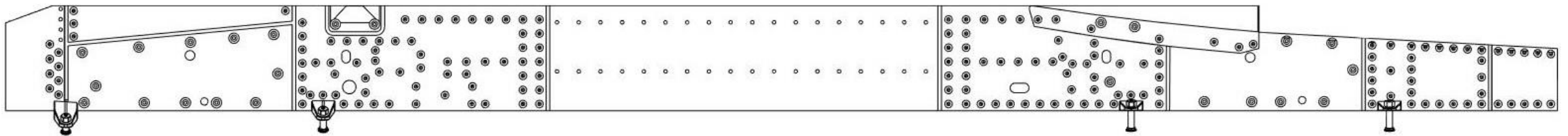
PM-3 Centerline Bomb Pylon

Aircraft Types:

Dassault Mirage III All versions
Dassault Mirage 5/V/50 All versions
IAI Kfir All versions
Pantera All versions
Atlas Cheetah All versions

Users:

All Mirage
III/5/50/Pantera/Kfir/Cheetah
operators





ARTMAN

DELTA

A passion for accuracy and detail

PM-3 Centerline Bomb Pylon Tech and Gen



PM-3
Centreline bomb carrying beam



ARTMAN

DELTA

A passion for accuracy and detail

Operational History and Users

South African Air Force



A pair Dassault Mirage III's of 2 Squadron SAAF no 804 (Left) and 802 (Right) Ondangwa in support of the opening attack of Cassinga Ops Reindeer 4th May 1978. Both being loaded with PM-3 belly racks for bombs and carrying a pair of RPK underwing drop tanks





ARTMAN

DELTA

A passion for accuracy and detail

Operational History and Users

South African Air Force

5 Sqn SAAF Cheetah E showing the PM-3 bomb carry beam on the belly centreline





ARTMAN

DELTA

A passion for accuracy and detail

Operational History and Users

South African Air Force

SAAF 2 Sqd Cheetah C with PM-3 carrying a pair of what appears to be "Rockeye" cluster bombs





ARTMAN

DELTA

A passion for accuracy and detail

Operational History and Users

South African Air Force

A spectacular photo of a Cheetah C dropping a full load of Mk82 bombs, see PM-3 on the belly

Photo Credit Herman Potgieter





ARTMAN

DELTA

A passion for accuracy and detail

Operational History and Users

South African Air Force



Cheetah C carrying a Mk81 bomb laden PM-3 on the centreline position



ARTMAN

DELTA

A passion for accuracy and detail

Operational History and Users

South African Air Force

Mirage IIICZ of 2 Squadron SAAF in the natural metal delivery scheme with a PM-3 on the belly





ARTMAN

DELTA

A passion for accuracy and detail

Operational History and Users

South African Air Force



Cheetah C loaded with "inert" Mk81 120Kg bombs



ARTMAN

DELTA

A passion for accuracy and detail

Operational History and Users

South African Air Force

Cheetah D carrying a pair of V3B IR short range AAM's, a pair of RPK drop tanks and a PM-3 on the belly each carrying a pair of 250Kg Mk82 bombs



 artmandeltasales@gmail.com

 [artman.delta](https://www.instagram.com/artman.delta)

 ArtMan Delta



ARTMAN

DELTA

A passion for accuracy and detail

Operational History and Users

French Air Force



A French Mirage 5F carrying a full bomb load, such a heavy load is most likely for demonstration purposes only.

Note the PM-3 on the belly



ARTMAN

DELTA

A passion for accuracy and detail

Operational History and Users

French Air Force

A beautiful French Mirage IIIE showing the versatility of the Mirage III platforms, carrying JL-100's and a PM-3 with training weapon mountings, on the belly peeking out from underneath





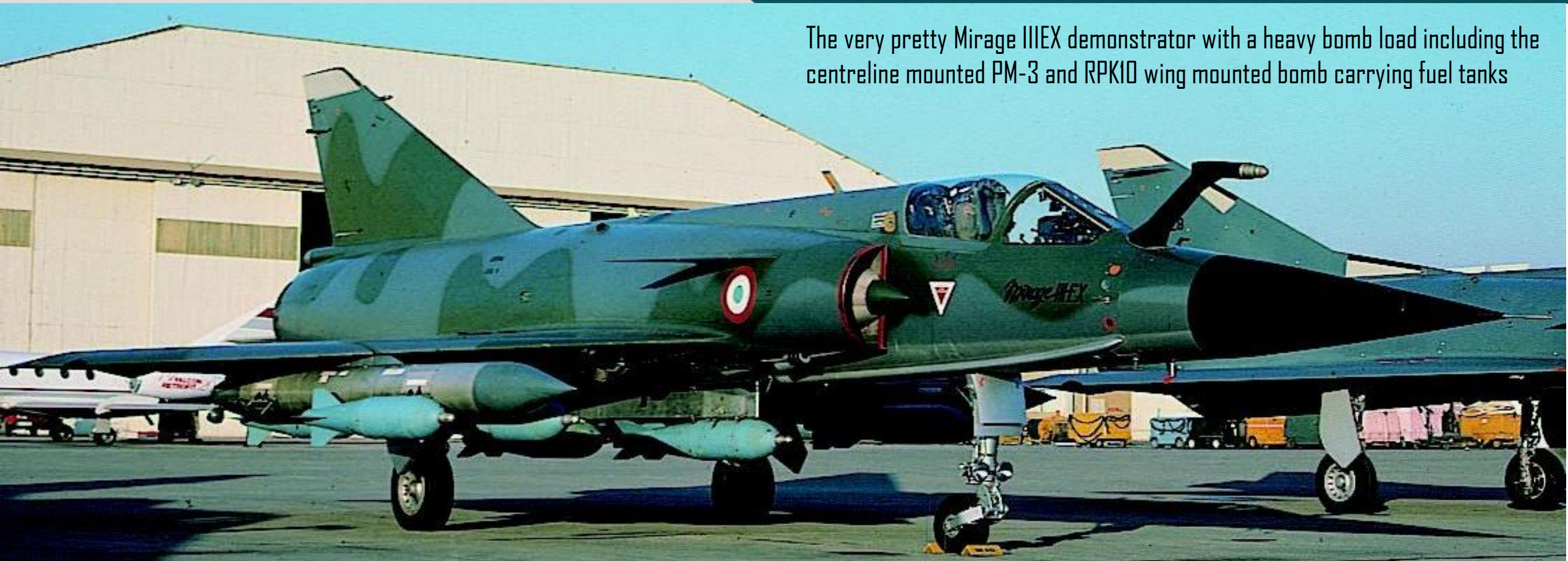
ARTMAN

DELTA

A passion for accuracy and detail

Operational History and Users

French Air Force



The very pretty Mirage IIIEX demonstrator with a heavy bomb load including the centreline mounted PM-3 and RPK10 wing mounted bomb carrying fuel tanks



ARTMAN

DELTA

A passion for accuracy and detail

Operational History and Users

Colombian Air Force



Colombian Kfir C2
carrying a PM-3,



ARTMAN

DELTA

A passion for accuracy and detail

Operational History and Users

Colombian Air Force



Colombian Kfir C10 carrying PM-3 loaded with a practice bomb carrier



ARTMAN

DELTA

A passion for accuracy and detail

Operational History and Users

Ecuadorian Air Force

Ecuadorian Cheetah C's both carrying PM-3. The Cheetah C on the right has the PM-3 is carrying practice bombs



COPYRIGHT SANTIAGO CHAVARRIA

AIRLINERS.NET



ARTMAN

DELTA

A passion for accuracy and detail

Operational History and Users

Pakistani Air Force

A very interesting Pakistani upgraded Mirage 5, the PM-3 is carrying a pair of 250kg retarded bombs





ARTMAN

DELTA

A passion for accuracy and detail

Operational History and Users

Pakistani Air Force



A Pakistani Mirage III (ex-Australian) with an empty PM-3



ARTMAN

DELTA

A passion for accuracy and detail

Operational History and Users

Argentinian Air Force

An Argentinian IAI Dagger, the PM-3 is carrying what looks like what could be any of the following a luggage/rocket/sensor/recce pod





ARTMAN

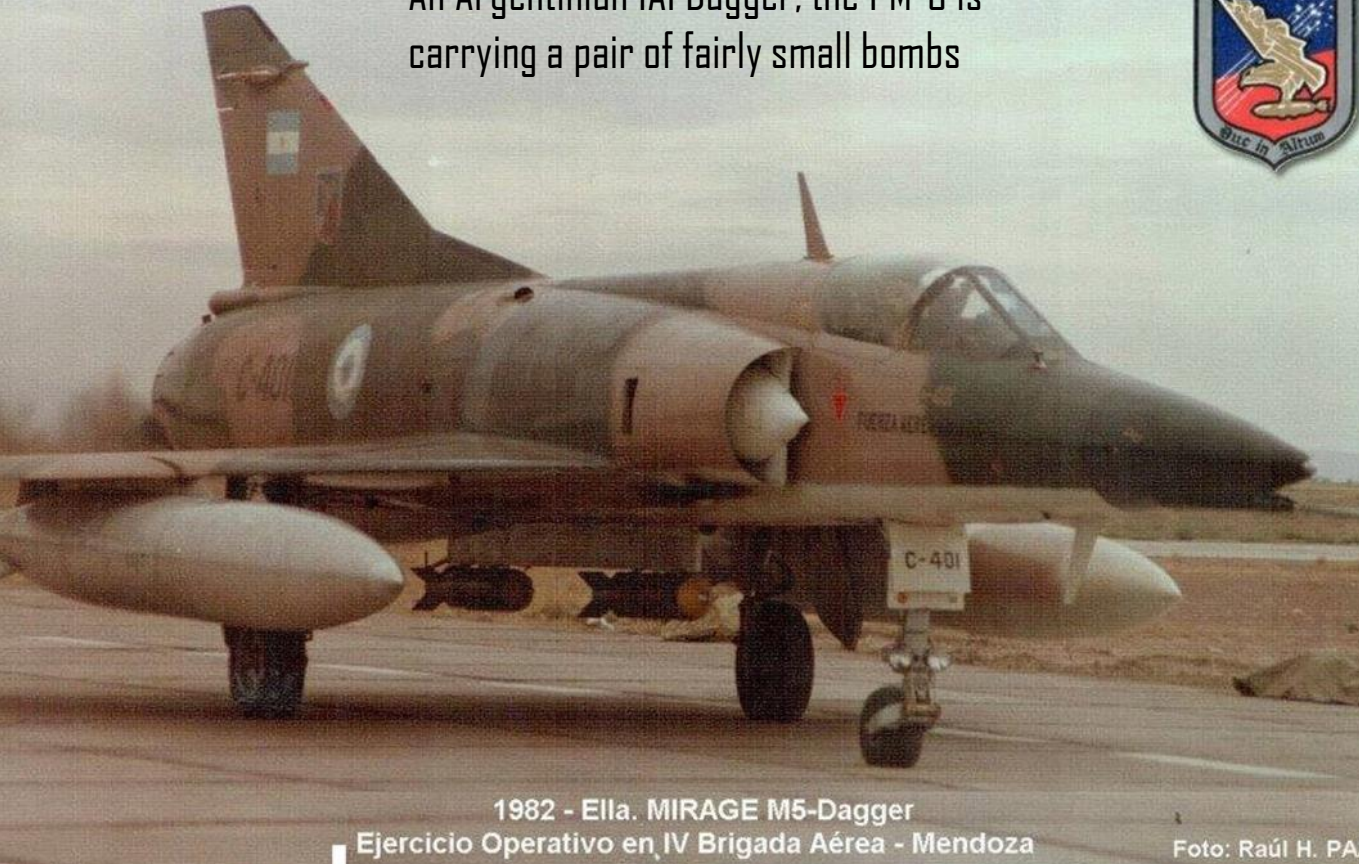
DELTA

A passion for accuracy and detail

Operational History and Users

Argentinian Air Force

An Argentinian IAI Dagger, the PM-3 is carrying a pair of fairly small bombs



1982 - EIIa. MIRAGE M5-Dagger
Ejercicio Operativo en IV Brigada Aérea - Mendoza

Foto: Raúl H. PAZ

An Argentinian IAI Dagger, it appears that the PM-3 is carrying a pair of Mk82 250Kg bombs





ARTMAN

DELTA

A passion for accuracy and detail

Operational History and Users

Argentinian Air Force



An Argentinian IAI Dagger, the PM-3 is carrying a pair of EXPAL BRP-250 bombs



ARTMAN

DELTA

A passion for accuracy and detail

Operational History and Users

Australian Air Force



A beautiful shot of a PM-3 loaded with a pair of Mk82 250kg bombs with M904E3 Fuses, on an Australian Mirage III



ARTMAN
DELTA

A passion for accuracy and detail

Building Instructions and Colour Callouts

Colour Callouts:

A - Bomb Pylon

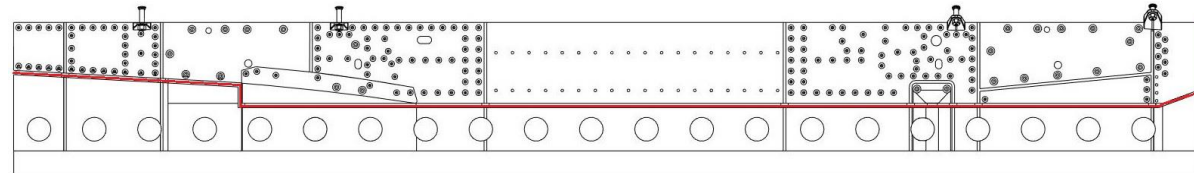
Check your references as the colours of the PM-3's depended on the users Air Force preferences

B - Bombs

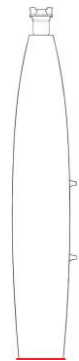
Check your references as the colours of your selected bombs depended on the users Air Force preferences

**It is recommended to use a primer prior to painting the parts*

A



B



Fuse type is dependent on your selected boxing. The M904E3 has been used here for illustration purposes and is not necessarily what is included in your box

Be careful not to remove the tab highlighted in Blue

Remove the print supports beyond the red lines



ARTMAN

DELTA

A passion for accuracy and detail

Building Instructions and Colour Callouts

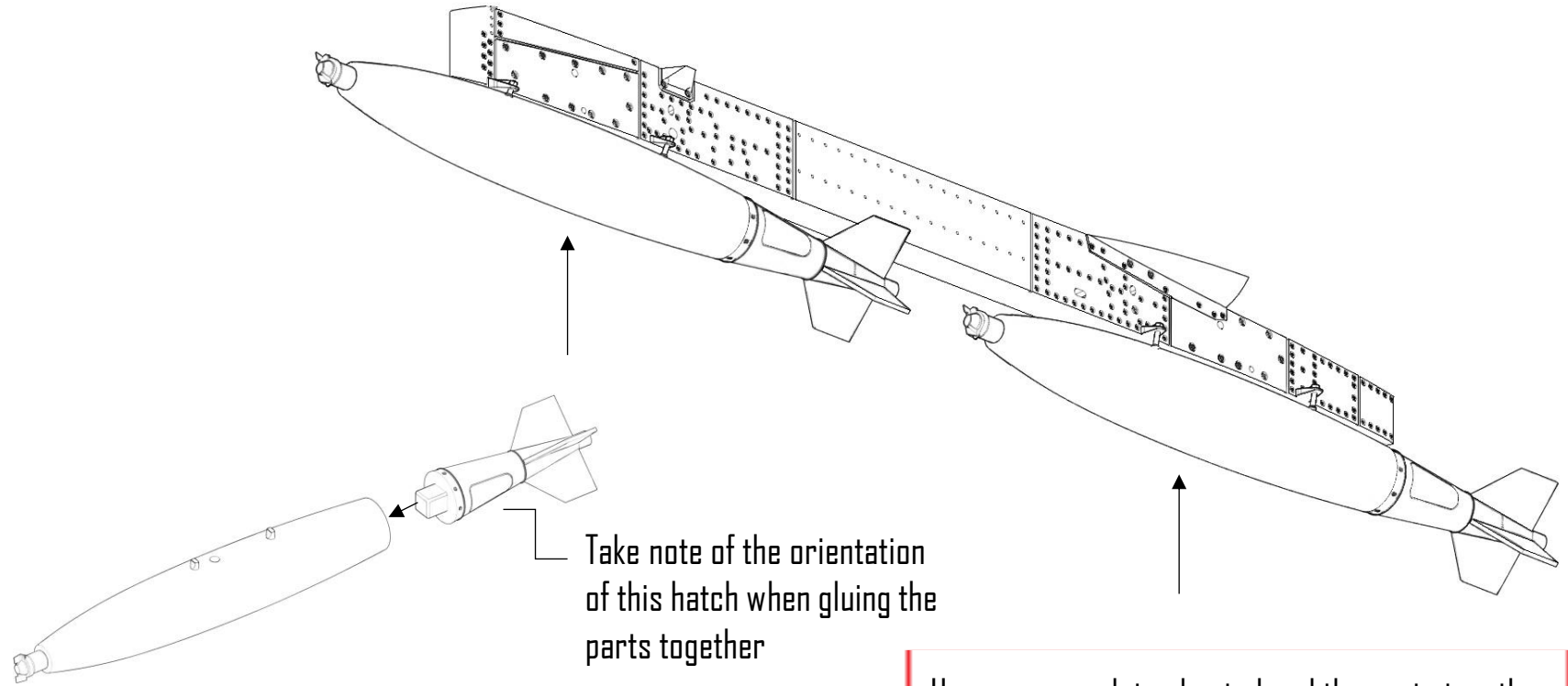
Colour Callouts:

A - Bomb Pylon

Check your references as the colours of the PM-3's depended on the users Air Force preferences

B - Bombs

Check your references as the colours of your selected bombs depended on the users Air Force preferences



Use cyanoacrylate glue to bond the parts together





ARTMAN
DELTA

A passion for accuracy and detail

ArtMan Delta Disclosures

WARNING

This is not a toy.

These items are not suitable for children .

Modelling experience is required.

Always wear eye protection when cutting the resin off any supports.

Do not breathe the resin dust in as it may be harmful to your health.

It is recommended to wear breathing protection such as a face mask when handling and cutting/ grinding/ sanding resin.

Not for human consumption, keep away from children.

Acknowledgements

Every effort has been made to reproduce these scale model accessories to as accurate proportions as possible from measured full scale aircraft parts and resulting technical drawings. All work is original. We would like to thank ArtMan Delta's good friend, Malcolm Reid for his incredible insight, knowledge and information shared with ArtMan Delta to make these parts into what they are. ArtMan Delta would also like to thank any unreferenced photographers for their incredible photographs that have assisted in giving the level of detail ArtMan Delta wishes to share with the world for the benefit of historical remembrance and accurate facts but most importantly the joys of modelling. Should any of the photographers recognise photographs in these instruction sheets, please contact ArtMan Delta in order for us to give credit where credit is due. Lastly, thank you, to you, our customer for purchasing an ArtMan Delta set, without your support none of this would be possible.