



**ARTMAN**  
DELTA

A passion for accuracy and detail

# Dassault Mirage F1 Centreline Tank and Wing Pylons

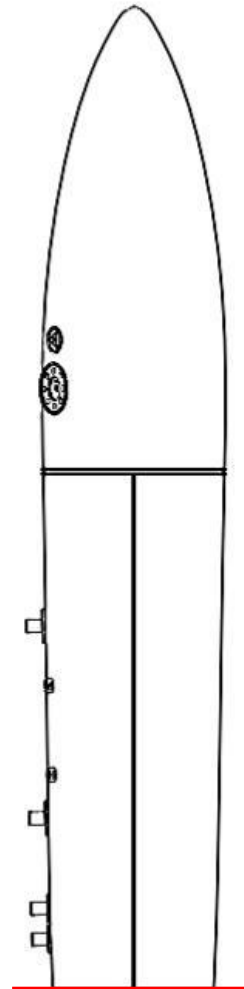
## Building Instructions and Colour Callouts

### Colour Callouts:

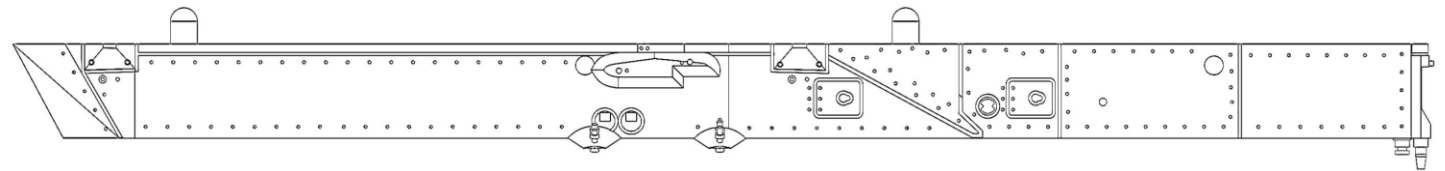
Check reference sources for preferred colours.

The Mirage F1 pylons had many variations of colour with many of them remaining in Natural Metal but were at times painted in various camouflage colours and patterns.

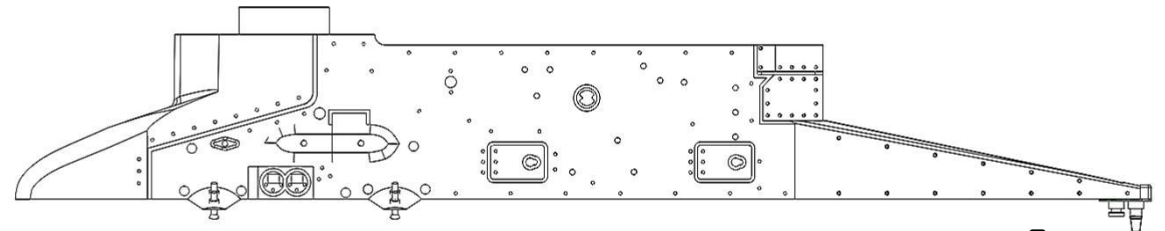
For in depth research, information and photos, see the **ArtMan Delta Info Packs and Reference e-Books** for the **Dassault Mirage F1**



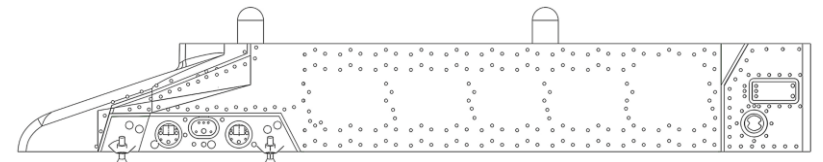
Remove supports from the topside of each pylon



x1

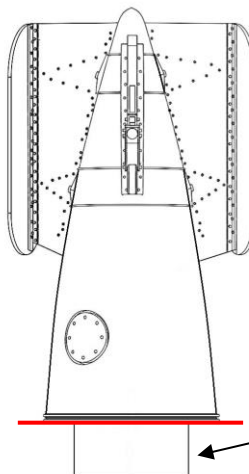


x2



x2

x1

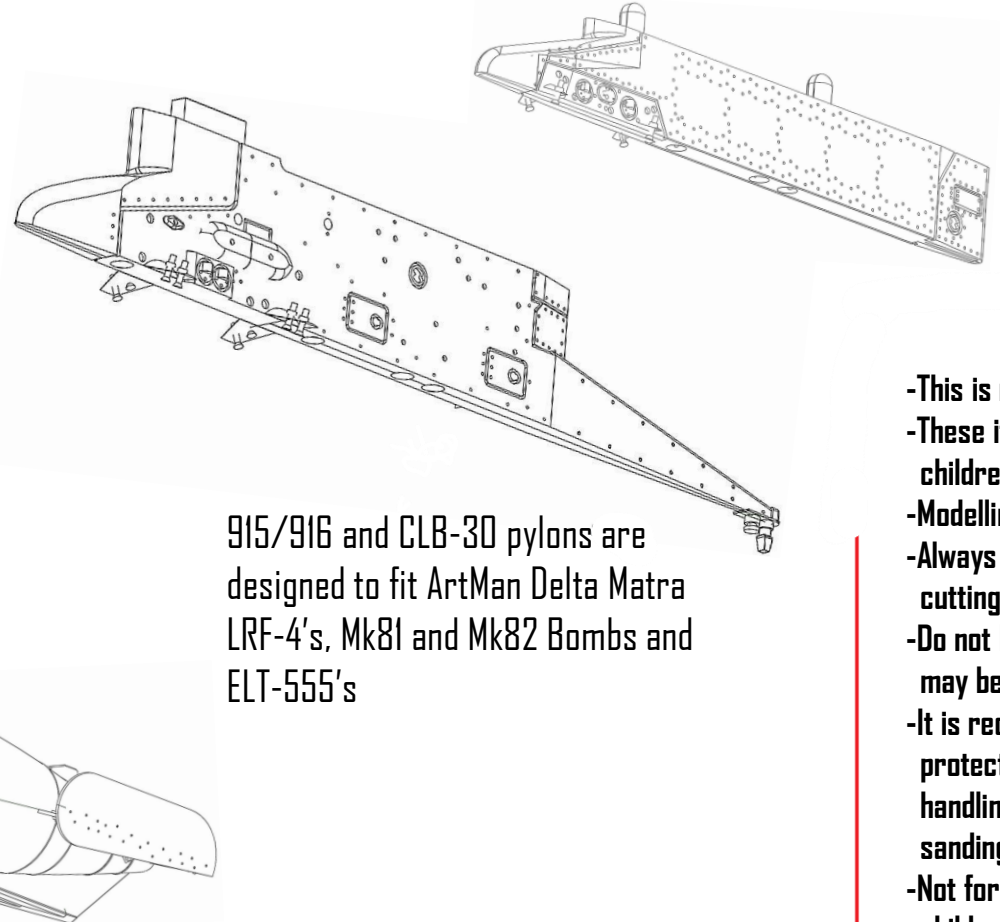
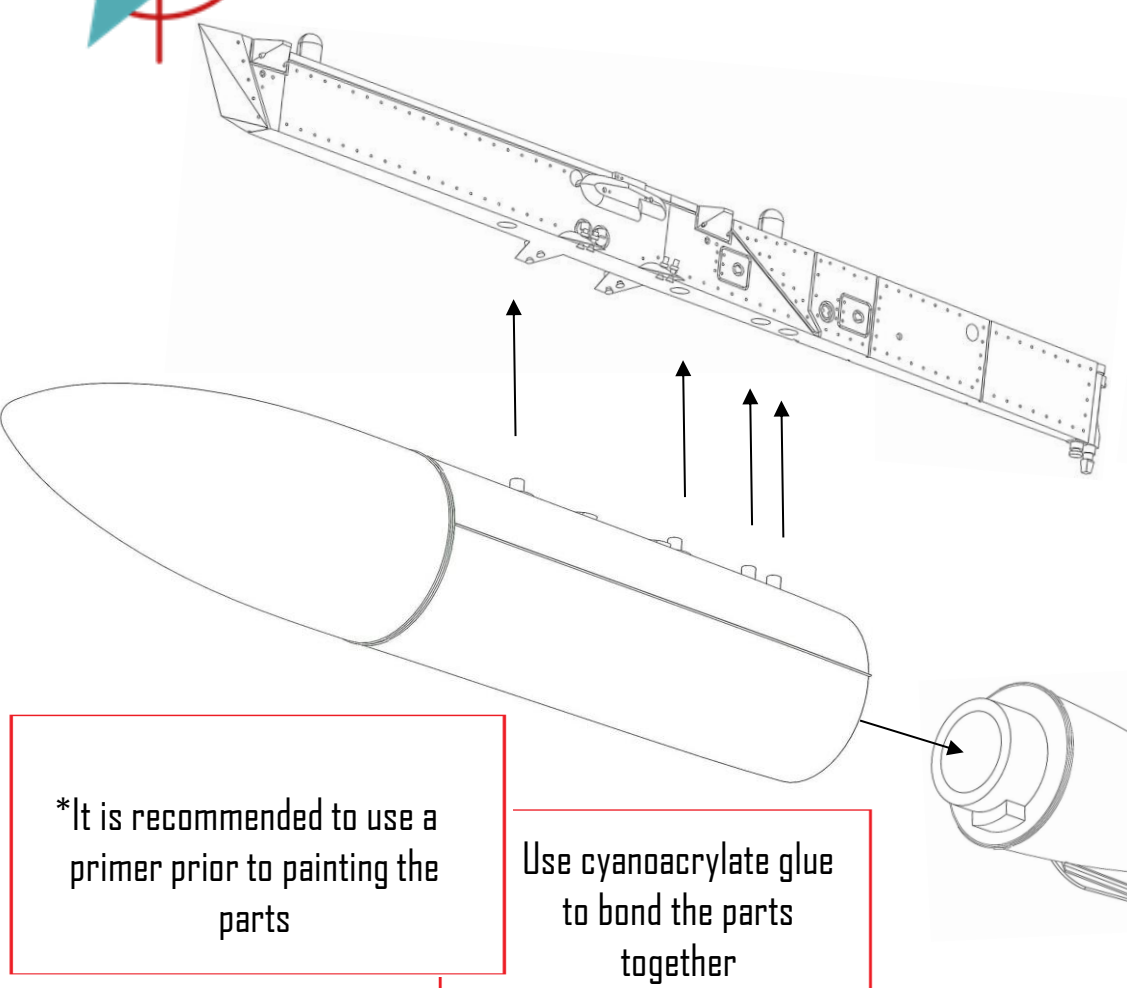


Do not remove locator cylinder

*Remove the print supports below the red lines*



**AD48023** – Designed to be used on Italeri/ESCI 1:48 Dassault Mirage F1 Kits



915/916 and CLB-30 pylons are designed to fit ArtMan Delta Matra LRF-4's, Mk81 and Mk82 Bombs and ELT-555's

\*It is recommended to use a primer prior to painting the parts

Use cyanoacrylate glue to bond the parts together

**WARNING**

- This is not a toy.
- These items are not suitable for children.
- Modelling experience is required.
- Always wear eye protection when cutting the resin off any supports.
- Do not breathe the resin dust in as it may be harmful to your health.
- It is recommended to wear breathing protection such as a face mask when handling and cutting/ grinding/ sanding resin.
- Not for consumption, keep away from children and animals.