



# ARTMAN

## DELTA

A passion for accuracy and detail

# PM-3 Centreline Bomb Pylon Building Instructions and Colour Callouts

### Colour Callouts:

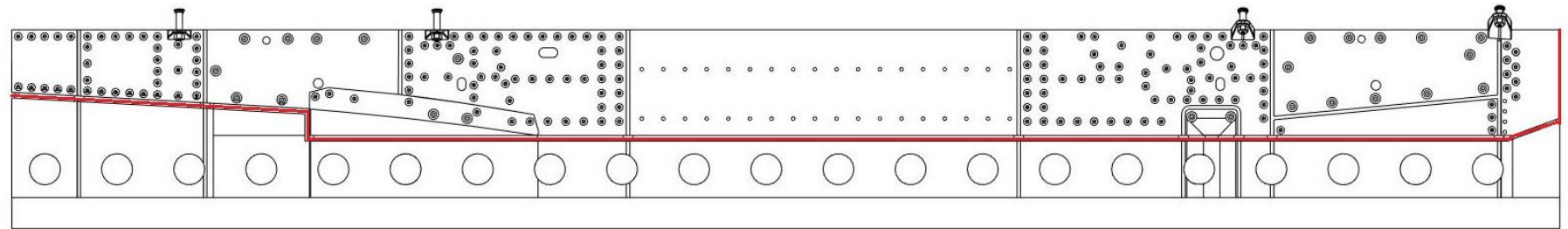
\*See preferred references to decide what colours to use on your **PM-3 and Bombs** by viewing the **PM-3 Info Pack**

\*It is recommended to use a primer prior to painting the parts

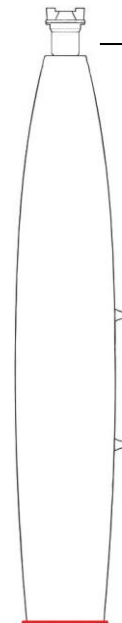


\*It is recommended to use a primer prior to painting the parts

A



B



Fuse type is dependent on your selected boxing. The M904E3 has been used here for illustration purposes and is not necessarily what is included in your box



Be careful not to remove the tab highlighted in Blue

*Remove the print supports beyond the red lines*



**AD32008** – Designed to be used on 1:32 Dassault Mirage IIIC/D/E/R/V/ Nesher / Dagger / Pantera / IAI Kfir and Atlas Cheetah Kits  
**AD48008** – Designed to be used on 1:48 Dassault Mirage IIIC/D/E/R/V/ Nesher / Dagger / Pantera / IAI Kfir and Atlas Cheetah Kits

Use cyanoacrylate glue to bond the parts together

\*It is recommended to use a primer prior to painting the parts

x2

Take note of the orientation of this hatch when gluing the parts together

### WARNING

- This is not a toy.
- These items are not suitable for children.
- Modelling experience is required.
- Always wear eye protection when cutting the resin off any supports.
- Do not breathe the resin dust in as it may be harmful to your health.
- It is recommended to wear breathing protection such as a face mask when handling and cutting/grinding/ sanding resin.
- Not for consumption, keep away from children and animals.